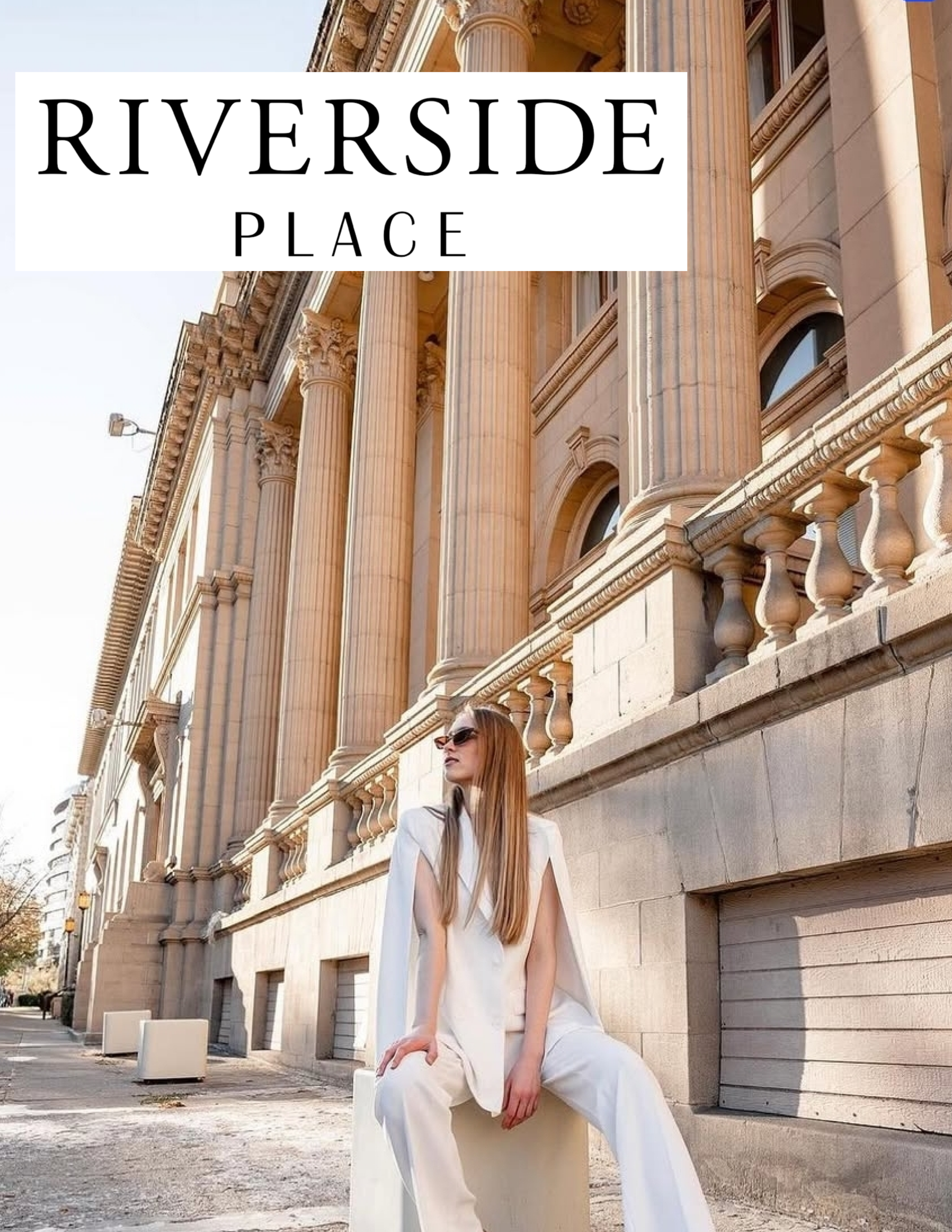


RIVERSIDE PLACE



RIVERSIDE PLACE



| 2025 | Theatre Ceremony Seating | Cocktail Seating | Seated | Saturday | Friday & Sunday | Monday - Thursday |
|-----------------|--------------------------|------------------|--------|--|-----------------|-------------------|
| Falls Penthouse | 350 | 300 | 256 | \$3,900 | \$3,800 | \$3,400 |
| Ballroom | 450 | 400 | 400 | \$3,900 | \$3,800 | \$3,400 |
| Commandery Room | 112 – 500 with balcony | 150 | 112 | \$2,800 | \$2,600 | \$2,600 |
| Auditorium | 260 - 1200 with balcony | 400 | 150 | \$3,100 * <u>event end</u> by 3PM \$5,000 * <u>after</u> 3PM | \$3,100 | \$3,100 |

2026 Rates - \$200 price increase per event room

Spokane’s only downtown historical venue
with 4 unique event spaces

- Chairs, tables, and linens
 - Event Time 5 hours
 - Complimentary Parking for up to 75 guests
 - Floor plans
 - Full set-up & tear down by facilities
- 4 hour event decor set-up - day before or day of
 - Extended event times available
 - Bridal suites available
 - Venue Coordinator to assist with logistics
 - 35% payment required to reserve date & space

TO BOOK A TOUR OF RIVERSIDE PLACE
Anna Senchenko - Venue Coordinator | 509-747-1200 | events@riversideplace.com
1110 W Riverside Ave Spokane, WA 99201

RIVERSIDE PLACE

BAR

Riverside Place provides professional bar service and a selection of beers, wine and spirits.

Bar Options

Hosted Bar - Host all drinks - beer, wine, & cocktails

Partial Hosted - Host pays for a set amount of quantity

Cash Bar - Beer, wine, & cocktails are paid for by the guests



BEER

House Beer: \$6/glass-
selection varies by event

WINE

House Wine: \$6/glass -
\$17/bottle

SPIRITS

Well Cocktails: \$8/glass
Premium Cocktails:
\$10/glass



Basic Set-up - \$300

*nice silver beverage tubs, tap box, bar
small wares, ice & disposable cups*

Bartenders - \$50/hr

*number of bartenders required
depends on the chosen
bar selection & guest count*

*Riverside Place is a WA State licensed
facility to sell and service alcohol.
All liquor must be purchased from and
served by Riverside Place*

CATERING

Premier On-site Caterer
London's Ultimate Catering
509-570-2348
londonsultimatecatering.com

Premier Off-site Caterer
Beacon Hill Catering & Events
509-482-3556
beaconhillevents.com

Outside Caterer Allowed
fullservice caterers only - \$5pp additional charge

TO BOOK A TOUR OF RIVERSIDE PLACE

Anna Senchenko - Venue Coordinator | 509-747-1200 | events@riversideplace.com
1110 W Riverside Ave Spokane, WA 99201